

INDUSTRY *Today*



Containers for choppers
PAGE 12



Workers of the future
PAGE 13

Emissions reduction plan passes

By Dominic Giannini and Maeve Bannister, AAP Canberra

A new carbon pollution cap will be imposed on big emitters in a bid to tackle rising global temperatures.

The reformed safeguard mechanism means the nation's 215 biggest emitters will need to reduce their emissions by 4.9 per cent each year.

This is expected to reduce emissions by 205 million tonnes by 2030.

Full story page 4

Women take the lead in mine rescue

Queensland's first-ever all-female Mines Rescue Team has been formed at Anglo American's Capcoal Open Cut Mine, near Middlemount, and is set to join the state's competitive Mines Rescue Open Cut Circuit.

Known as the Women of Steel, the team is made up of seven women who are now in training for the QMRS Mines Rescue Challenge later this year.

Full story page 8

Funding for workers' inclusion

The Queensland Resources Council (QRC) has welcomed Queensland Government funding for an initiative to address skills shortages and create job opportunities for groups under-represented in the mining and energy workforce.

Heralding a period of systemic change for the sector, QRC Chief Executive Ian Macfarlane said the \$963,000 made available through the Workforce Connect Fund will support the QRC's new Resources W.I.D.E (Workforce Inclusion & Diversity Engagement) project.

Full story page 11



Skills camp a 'thumbs up' experience

Students were able to unearth valuable new industrial technology and design (ITD) skills as part of an "Oresome Trade Camp".

Full story page 2 and photos page 14

Power shock

By Karen Simmons/AAP

Queensland Conservation Council energy strategist Clare Silcock believes the state government should take full ownership of Callide C, after joint owners Interger's subsidiary, IG Power, collapsed.

The power station near Biloela has been plagued with issues, having failed after an explosion in its turbine hall in May 2021.

Part of a cooling tower collapsed at the

power station in October last year, 16 months after the explosion.

Both its C3 and C4 generating units remain offline after the incidents.

"It's no surprise that IG Power has gone into administration," Silcock said.

"Both units of Callide C have broken down and won't be running again until at least September.

"It's very hard to be a financially viable coal-fired power station operator when your coal-

fired power station isn't operational."

"But it is only six years since IG Power went into administration last time and was rescued by a "related entity".

"IG Power is at least partly responsible for the decision to pour hundreds of millions of dollars into replacing the Callide C4 turbine, despite the Queensland Energy and Jobs Plan providing a clear intention to end reliance on coal in Queensland by 2035."

Full story page 3

The editor's desk

Welcome to our third edition of Industry Today.

It is always fascinating to see the projects that are coming out of schools for our younger generation.

With brand new facilities allowing the exploration of STEM, I think it is a wonderful opportunity for kids to learn more about the world of today.

In this edition, we see CQUniversity receive \$200,000 in funding to go towards its STEM Central facility.

Twenty students from Central Queensland schools participated in a mine site tour and gained hands-on experience with industry professionals.

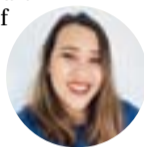
Down in Gladstone, students learned how to manage ships, trucks and tides.

How awesome are these opportunities?

Rockhampton has had its fair share of celebrations with the opening of the new Bravus office and its commitment to employing local staff. Hopefully, I will get the opportunity for a grand tour soon.

In other news, Gladstone seems to have interesting developments on the horizon with the CS Energy Callide C collapse and Rio Tinto's partnership with the likes of Queensland Alumina Limited for their water usage project.

- Khrysti Balanay



INDUSTRY TODAY



Students dig skills

INSIDE

JOBS IN CQ WITH WENDY

HANNAN COLUMN page 5

ADVANCE ROCKY WITH

GREG BOWDEN COLUMN page 5

ASPIRE CQ WITH WARREN

ACUTT COLUMN page 10

QMEA RESOURCES

CAMP PHOTOS page 14

CQIC COLUMN page 22

CONTACT US

INDUSTRY Today

Telephone: 07 48635050

Address: 5-9 Hemenstall Street,
Kawana, QLD 4701

EDITORIAL

Rockhampton

Matthew Pearce Journalist

E: matthew.pearce@CQToday.com.au

Khrysti Balanay Journalist

E: khrysti.balanay@CQToday.com.au

Trish Bowman Journalist

E: trish.bowman@CQToday.com.au

Katherine Butler Journalist

E: katherine.butler@CQToday.com.au

Gladstone

Karen Simmons Journalist

E: karen.simmons@GladstoneToday.com.au

Brittney Manning Journalist

E: brittney.manning@GladstoneToday.com.au

ADVERTISING

Rockhampton

Peter Lynch Account Manager

E: peter.lynch@CQToday.com.au

Greg Thompson Account Manager

E: greg.thompson@CQToday.com.au

Gladstone

Cheryl Altouvas Key Account Manager

A mine site tour and 'Oresome Trades' camp this week has seen 20 students from Dysart, Moranbah, Blackwater, and Mackay state high schools unearth valuable new industrial technology and design (ITD) skills.

Thanks to support from BHP Mitsubishi Alliance (BMA), the Queensland Minerals and Energy Academy (QMEA) delivered a week-long educational experience for Central Qld students in Years 11 and 12 who got their hands on the tools to build their own model-scale heavy mining equipment.

QMEA Director, Ms Katrina-Lee Jones said this annual program offered students considering tertiary pathways after school a chance to immerse themselves in the life of a trades professional in an exciting industry with cutting-edge technology, and for one of the region's largest local employers.

"Oresome Trades camp is a dynamic and engaging opportunity for young men and women considering a vocational career journey to bolster their professional and life experience under the guidance of BMA tradespeople, who provided a real-world context for the tasks they completed," Ms Jones said.

"Participants enjoyed staying at the mine's residential village, and over the past week, they tried out trade activities like mechanical, electrical, pneumatics, and welding in the safety of their classroom environment as they designed and built their own heavy mining equipment like a haul truck and water truck, equipped with working lights and electrics."

Glenn Kirkpatrick, BMA's Saraji Mine General Manager said students were thrilled to get a behind-the-scenes look at the remarkable intricacies of an open-cut mine site when they had a tour of Saraji Mine on Wednesday.

"This month, BMA welcomed 41 new enthusiastic young women and men as part of its annual apprenticeship intake, demonstrating our commitment to investing in the next generation and supporting local jobs," Mr Kirkpatrick said.

"The annual Oresome Trades Camp complements our efforts to continue building a sustainable talent pipeline and gave students in their final years of senior school the opportunity to sample different trade roles and experience life at a mine site.

"Today, the students are proudly displaying their newly learnt trade skills as they present their model mine site vehicles to representatives from BMA, giving them the opportunity to showcase their ability to communicate, work in a team, and problem solve - all qualities that are critical for future job-readiness."

Dysart State High School Principal, Ms Cheryl Perry said this camp was an invaluable experience for students on the precipice of choosing their career pathway after they leave school.



"As educators, we know how much students benefit from applying real-world scenarios to their classroom learning, and this camp was a fantastic way for them to try out technical roles that remain in enduring demand in their own backyards," Ms Perry said.

"We want to encourage them to pursue career pathways that they're passionate about, and we're proud to partner with the QMEA to help them navigate the challenging decision of choosing their tertiary education or training journey."

As Australia's largest and most successful

industry-led education and schools initiative, the QMEA seeks to broaden student and teacher knowledge of career opportunities in resources.

The academy encourages a talent pipeline of employees into vocational and professional careers, with a focus on female and Indigenous participation. The QMEA currently engages with 90 schools and is a partnership between industry and the Queensland Government under its Gateway to Industry Schools program.

Turn to page 14 for more photos

Call for State to step in

By Karen Simmons/AAP

Queensland Conservation Council energy strategist Clare Silcock believes the state government should take full ownership of Callide C, after joint owners Interagen's subsidiary, IG Power, collapsed.

The power station near Biloela has been plagued with issues, having failed after an explosion in its turbine hall in May 2021.

Part of a cooling tower collapsed at the power station in October last year, 16 months after the explosion.

Both its C3 and C4 generating units remain offline after the incidents.

"It's no surprise that IG Power has gone into administration," Silcock said.

"Both units of Callide C have broken down and won't be running again until at least September.

"It's very hard to be a financially viable coal-fired power station operator when your coal-fired power station isn't operational."

"But it is only six years since IG Power went into administration last time and was rescued by a "related entity".

"IG Power is at least partly responsible for the decision to pour hundreds of millions of dollars into replacing the Callide C4 turbine, despite the Queensland Energy and Jobs Plan providing a clear intention to end reliance on coal in Queensland by 2035."

Silcock said the Energy and Jobs Plan doesn't set a clear retirement date for Callide C because of the complexities of the joint venture, which creates more uncertainty for Queensland workers and communities.

"The Queensland Government needs to accept that the joint venture was a failure and that taking public ownership is the best way to manage the transition to cheaper, cleaner energy, without getting pulled into the financial games of large private companies.

"The Government should also look closely at Millmerran, Interagen's other privately held coal-fired power station in Queensland and consider opportunities to bring that back into public ownership to be able to provide the certainty we need to manage the transition."

CS Energy said in a statement it remained "business as usual" for CS Energy staff at Callide C.

"We remain committed to the safe and timely reinstatement of the Callide C Power Station units 3 and 4, and are working through our options to achieve this," CS Energy said.

CS Energy owns the entirety of Callide B, which is the second power plant comprising the Callide Power Station.

In late February CS Energy announced that Andrew Bills was stepping down as Chief Executive Officer, following his appointment as Chief Executive Officer of SA (South Australia) Power Networks.

Mr Bills said he led CS Energy, a publicly-owned company that owns most of the Callide Power Station, through an evolution from



CS Energy has added more than 300 megawatts of contracted renewables to its portfolio in recent years including the Moura Solar Farm. Picture: SUPPLIED

a wholesale generator to a diversified energy business.

"While the decision to leave CS Energy was a difficult one, I am confident the business is very well placed with highly committed and capable people and a substantial pipeline of new energy investments to lead Queensland's energy transformation," Mr Bills said.

CS Energy has added more than 300 megawatts of contracted renewables to its portfolio in recent years including the Moura Solar Farm, a 90 MW project near the town of Banana in Central Queensland.

Greek industrial company Mytilineos acquired the project from ESCO Pacific in 2020.

Located approximately 12 km east of Moura and 6km southwest of the township of Banana, the project construction was completed and operational in August 2022 and covers an area of approximately 203 hectares.

Expected to have a 30-50-year life span, the solar farm is comprised of an array of solar PV modules, steel racking and piled supports, internal access tracks, an electrical operations room, substation, perimeter fencing, and an adequate buffer between sensitive receptors provided by setback and landscape planting.



Moura Solar Farm, owned by Greek industrial company Mytilineos, pictured at its halfway point during construction in May last year.



**SUPPORTING
THE GLADSTONE
REGION FOR OVER
40 YEARS**

17 Garfield St Gladstone 4680
07 4976 7999
www.walzgroup.biz



12540359-JW12-22

Coal generation still rising

By Marion Rae, AAP Canberra

Australia generated a quarter of its electricity from solar and wind in 2022, more than double the global average, a think tank says.

Wind and solar are also accelerating worldwide, research released on Wednesday shows, with last year's global rise in solar generation enough to have met the annual electricity demand of Australia.

The report by independent energy think tank Ember found last year may have been the peak of electricity emissions and the final year of fossil power growth, with clean power forecast to meet all demand growth this year.

But the report also found global coal-fired generation was still rising (up 1.1 per cent) even as wind and solar surged (19 per cent).

The electricity sector, in Australia and worldwide, is the biggest greenhouse gas emitter and must decarbonise if international net zero goals are to be met.

A cleaner power supply is also expected to trigger the electrification of big polluters in heavy industry and transport.

"Tracking progress on how our electricity is generated is critical, as it is not only a huge source of greenhouse gases, it is also needed as an enabler of a cleaner and more efficient energy system overall," Ember's chair Baroness Bryony Worthington said.

While 2022 may be seen as the turning point, fossil fuels are still providing the backbone of the electricity system in many large economies including Australia, according to the Global Electricity Review 2023.

However, the carbon intensity fell to a re-



Coal powered electricity generation is still rising despite solar and wind surging.

Picture: DARREN PATEMAN/AAP

cord low in 2022 on record growth in wind and solar, which counted for 12 per cent of the global electricity mix - up from 10 per cent in 2021.

Solar generation rose by almost a quarter (24 per cent), making it the fastest-growing electricity source for 18 years in a row, while wind generation grew by 17 per cent.

Gas power generation eased 0.2 per cent in 2022, falling for the second time in three years

as high gas prices continue.

Russia's invasion of Ukraine made many governments rethink their plans amid spiking fossil fuel prices and security concerns about relying on fossil fuel imports, but it also accelerated electrification with rising consumer demand for electric cars and heat pumps.

Gas-to-coal switching was limited in 2022 because gas was already mostly more expensive, with only 31 gigawatts of new gas power

plants built in 2022, which was the lowest in 18 years. A gas power phase-down is now within reach for the first time, the report said.

But last year also saw the lowest number of coal plant closures in seven years as countries relied on the fossil fuel to maintain back-up capacity.

Coal power remained the single largest source of electricity, producing more than a third (36 per cent) of global electricity in 2022.

Pollution crackdown hits biggest emitters as laws pass

By Dominic Giannini and Maeve Bannister, AAP Canberra

A new carbon pollution cap will be imposed on big emitters in a bid to tackle rising global temperatures.

The reformed safeguard mechanism means the nation's 215 biggest emitters will need to reduce their emissions by 4.9 per cent each year.

This is expected to reduce emissions by 205 million tonnes by 2030.

Climate Change and Energy Minister Chris Bowen said the laws set Australia on the pathway to achieving emissions reduction targets and would boost investment in renewables.

"To achieve net zero we can't start in 2044 or 2045, we must start today," he told parliament.

"The best time (to start) would have been 10 or 15 years ago - the second best time is today."

Mr Bowen thanked cross bench MPs for working constructively with the government on the mechanism to get it passed by parliament.

"What the parliament has done today is



The federal government says the laws will reduce emissions by 205 million tonnes by 2030. Picture: DAN HIMBRECHTS/AAP

safeguard our climate, safeguard our economy and safeguard our future," he said.

Independent MPs Zali Steggall and Allegra Spender urged the coalition to support the bill if they wanted a chance at winning back the seats taken by the teals at the last federal election.

Rebel Liberal MP Bridget Archer, who previously indicated she could cross the floor in support of climate action, abstained from voting.

Prime Minister Anthony Albanese said Australians had voted for action on climate change and now the parliament was taking it.

Assistant Climate Change and Energy Minister Jenny McAllister said businesses would be punished by the market for not acting to reduce emissions, adding that 80 per cent of the companies covered by the cap already had net-zero emissions targets.

The government this week reached a deal with the Greens and crossbenchers to deliver the votes needed to pass the bill.

The Greens deal puts a ceiling on gross greenhouse gas emissions, which won't be able to exceed current pollution levels of 140 million tonnes a year, and there will be a decreasing cap over time.

Greens leader Adam Bandt said the changes to the bill secured by his party were an important victory for the climate.

"For the first time ever, in law, pollution from coal and gas and other corporations that are covered by the safeguard will not be allowed to rise and must go down," he said.

He said the Greens would continue to fight to stop new coal and gas projects from opening up.

The bill will include a "pollution trigger" that will require the climate change minister to consider whether a coal and gas project should go ahead if it's at risk of an emissions blowout.

The project could then be restricted or stopped.

Nationals Senate leader Bridget McKenzie said the laws would send energy prices up, with large companies passing on the price increases resulting from reducing emissions.

"They cannot tell us how many jobs will be impacted. They cannot tell what the business cost and impact will be," she said.

Senator McKenzie said two large rail businesses would be impacted, which would push cargo onto more emissions-intense trucks.

"It just beggars belief they haven't gone through the unintended and quite perverse consequences of this legislation."

Senator McAllister said a fund under the government's energy transition plan would also ensure businesses were not left high and dry.

Proudly supporting CQ Industry Today for the benefit of the Region

Hydraulic & Pneumatic Supplies and Servicing
 1-3 Werribee St Kawana QLD 4701
 07 4921 2921 | www.thehydraulicsshop.com.au

12590774-A11-23

CIS CHAUVEL INDUSTRIAL SERVICES

- On-site maintenance, shutdown and workshop facilities
- Mechanical and Fabrication
- Pumps, pulleys, conveyor supply and service
- Civil and concreting
- Blast and paint

EXCEEDING EXPECTATIONS

07 4926 8588 | chauvel.com.au

Head Office: 26 Hempenstall St, Nth Rockhampton
 Emerald: 6 Daniels St, Emerald

12561270-MS34-22

CQ vacancies show stability

JOBS IN CQ with Wendy Hannan

The Australian Bureau of Statistics (ABS) latest media release on job vacancies across Australia has reported February 2023 vacancies were down one per cent from November 2022, and down nine per cent from the peak in May 2022. Whilst vacancies have been on the decline over the last three quarters, job vacancies are still high, nearly double what they were at the start of the pandemic.

Regional Labour Force data shows that the number of employed persons in Central Queensland increased by eight per cent over the year, compared to 4.1 per cent annual change for Queensland. Unemployment decreased by 1.8 per cent to 3.3 per cent, compared to 3.8 per cent annual change in Queensland.

The local CQ picture is stable

At a local level, we have seen the number of job vacancies on the Jobs in CQ website increase by 10.84% in March, compared to February. However, March was three days longer than February and when the data is adjusted to account for this, the number of vacancies advertised for the two months is almost equal – 0.12 per cent higher in March.

Labour demand locally in Central Queensland is still generally high, particularly for professional roles such as Engineers and



Wendy Hannan from Jobs in Central Queensland.

skilled trades. However we are seeing supply significantly surpass demand in administration and for some unskilled vacancies.

GAWB pipeline project boosts local economy

The Fitzroy to Gladstone Pipeline project commenced in March with owners Gladstone Area Water Board (GAWB) shortlisting McConnell Dowell and CPB Contractors in their early contractor involvement process. The \$983 million project will see the construction of a 117km pipeline running from the Lower Fitz-

roy River to Yarwun and addresses Gladstone's single source water supply risk, as well as supporting the emerging hydrogen and renewables industry in the area.

The project sees yet another boost to the local economy with supply chain prospects for businesses and of course increases opportunities for local workers, with demand expected to create 400 jobs at the project's peak.

Expos to connect local businesses

Gladstone is set to see two Expos provide opportunities for local businesses and industry to showcase their services in the coming months. GEA's Supply Chain Expo is on 27 April and GCCI's Business Expo will be on 25 May. Both events offer the opportunity to connect and collaborate, creating opportunities for growth in all areas of the local community.

Psychosocial obligations change in April 2023

From April 2023, Queensland's statutory requirements for managing psychosocial risks are changing, with non-compliance being an actionable breach of the code. So it is important for employers to understand their responsibilities in relation to this.

In line with other health and safety approaches, workplaces are obligated to manage the risk of exposure to psychosocial hazards in the workplace. These hazards can include a

range of factors related to the social and cultural characteristics of a workplace, such as high work demands, poor support, low reward and recognition, remote or isolated work, and traumatic events.

These are in addition to the risks of bullying, harassment and sexual harassment that you will likely be more familiar with.

The impact on health after exposure to psychosocial hazards includes stress, anxiety, depression, PTSD, sleep disorders and suicidal thoughts.

The code notes that impacts can also include cardiovascular disease, musculoskeletal injuries, immune deficiencies and gastrointestinal conditions.

Your workplace must comply with the code and business need to review their systems to be up to date.

This can include formalizing existing systems for managing workload and processes on how to respond to psychosocial issues in the workplace. It is also advisable to educate managers on how to identify and respond to risks in their teams, whilst executives and boards should be aware of their legal compliance obligations.

For more information and insights about local job opportunities and recruitment support visit JobsinCentralQueensland.au

Strategic direction: What is putting Rocky on the radar

ADVANCE ROCKHAMPTON

GREG BOWDEN
EXECUTIVE MANAGER



This will be my last Industry Today column as my economic development journey in Central Queensland comes to an end. It would be remiss of me not to take a moment to reflect upon my time with the Advance Rockhampton team.

Leading the region's tourism, marketing, and economic development agency for the past two and half years was a great privilege and I have taken pleasure in delivering for residents, businesses, and visitors to the region. From day one I have espoused the five fundamentals required for a region to grow – Liveability, Visitability, Investability, Innovation and Collaboration and these are just as important now as they were then.

I'm excited that our 'It's Time to Put Rocky on Your Radar' campaign is gaining exposure and locals are starting to embrace what it means for our future.

Over my tenure at Advance Rockhampton, the team have achieved many things, but the delivery of the region's new Economic Development Strategy and Action Plan earlier



The Rockhampton River Festival is one of many events that have put Rocky on the radar.

this year is one I hold close to my heart. The delivery of these documents are a result of a huge amount of collaboration, engagement, and teamwork and will ensure Rockhampton remains the economic capital of CQ.

It has been great to be part of several firsts for the region. Being at the helm for Rock-

hampton now in its third year has been huge economic success for the region, hosting multiple industry forums, the introduction of e-mobility to the city making movement around the city so much easier and better connecting our precincts, bringing country music back to Rocky through Country on

Quay and Country on Kershaw and our focus on sporting tourism has delivered new events like the NRL games in 2021 and the Old Touch Junior State Cup.

Our region's history and future still rely heavily on being the energy capital of Australia, an agricultural powerhouse with water security, a transport and logistics hub and our long-term aspirations in the defence sector are also important growth opportunities.

Our hard work hasn't gone unnoticed with Advance Rockhampton taking out several prestigious accolades including a Grey Nomads Award, Tourism Queensland Awards, and an Economic Development Australia award.

In the tourism and marketing space it is more than a pretty picture on social media, so we have chosen to identify our niche and take the path of hard work in tackling our challenges and embracing our strengths.

A day in the life of an economic development professional is never boring and it's been a privilege to play a leadership role in such a progressive team with the ongoing support from the mayor, councillors, and the entire council team.

I look forward to seeing what the future holds for Rockhampton with my family still living in the region it's not a goodbye, rather a "see you again soon".

IT'S TIME TO
PUT ROCKY
ON YOUR
RADAR



ADVANCE ROCKHAMPTON
Rockhampton Regional Council

Inland track build cost up

By Stephanie Gardiner, AAP

The cost of Australia's largest rail project has doubled to an "astonishing" \$31.4 billion and is riddled with problems such as major delays, environmental challenges and inexperienced project managers.

An independent review into the Inland Rail, which links Melbourne and Brisbane to take freight off roads, has found the project faces "serious problems", and some work should stop to get costs under control.

Report author Kerry Schott said construction began "somewhat surprisingly" without knowing where the route would start or finish.

"The detailed and clearly defined scope of much of the route has not yet been settled as approval processes are not complete," Dr Schott wrote in the report, due to be made public on Thursday morning.

"Until this scope is firmed, an assessment of schedule and cost cannot be made with confidence."

The coalition government in 2015 said the project would cost \$10.7 billion, then \$16.4 billion in 2020 and the railway was expected to operate from 2027.

The latest estimate by the government-owned Australian Rail Track Corporation, which manages the Inland Rail, was \$31.4 billion with completion expected in the early 2030s.

Dr Schott said that proposed schedule should be regarded with "great caution", particularly as the corporation's poor environmental impact statements had not been approved by the Queensland government.

The rail track corporation's board had "weak" expertise in engineering, safety, environment and sustainability and contracts, something its members raised with coalition government ministers responsible for board appointments, she said.

"Across the entire project, ARTC has pressed ahead trying to make a virtually impossible delivery time, possibly pressed upon them by previous governments," Dr Schott wrote, urging it to stop work and spending on delayed



An independent review into the Inland Rail has found the project faces "serious problems".

Picture: SUPPLIED

parts of the project.

Dr Schott made several recommendations, including that Inland Rail be made a subsidiary company to allow it greater control of project management and the approvals process.

The project should also focus on being competitive with road transport, offering a 24-hour transit between the two cities, while further independent assessments of costs and scope were needed.

Despite its complex problems, the government should not abandon the project, she said.

"As it stands, Inland Rail is expected to accommodate and drive a modal shift of 200,000 trucks a year to rail, and this will bring significant benefits in terms of supply chain efficiencies, safety, environmental and congestion reductions."

Infrastructure Minister Catherine King said

the report revealed the coalition government's "shameful" approach.

"They have let down communities and businesses which have already invested time, effort and money in the prospect of Inland Rail," Ms King said.

"It is now up to the Albanese government to clean up this latest mess, and we will do so in a prudent and responsible way."

Glass smashed as thousands rally in union protests

By Tara Cosoleto, AAP

A glass door has been smashed at the Commonwealth parliament offices in Brisbane's city centre during a series of mass union rallies held nationwide.

The Brisbane rally was one of seven the Construction, Forestry, Maritime, Mining and Energy Union held across the country on Wednesday, 5 April.

The union is calling for industrial relation reform and the abolishment of the Fair Work Ombudsman.

"The Fair Work Ombudsman has been a dismal failure on wage theft, sham contracting and corporate insolvencies," CFMEU

national secretary Zach Smith said in a statement.

"Australian workers deserve a watchdog with teeth, not one that tickles the tummy of corporations who do the wrong thing."

Hundreds of members rallied outside the Brisbane Commonwealth parliament offices at Waterfront Place, carrying flags and smashing a glass door.

Thousands of others marched through city centres in Melbourne, Sydney, Adelaide, Perth and Cairns, chanting for workers to unite and holding signs saying, "Australia needs a pay rise".

Union secretary for Victoria and Tasmania John Setka also spoke at the Melbourne rally.

There have been a string of long-running disputes between the CFMEU and the Fair Work Ombudsman, several of which have ended up in the Federal Court.

Last month, the court imposed \$114,000 penalties against the union over an unlawful disruption case brought forward by the ombudsman.

Another case between the union and the ombudsman was listed for an interlocutory hearing in the Federal Court in Melbourne on Wednesday morning.

In a statement, the Fair Work Ombudsman defended its record, noting that in the last financial year it recovered more than \$532 million on behalf of over 384,000 underpaid workers.

A spokesman said the ombudsman had no jurisdiction in relation to a building contractor's right to receive payments, including in an insolvency context.

A spokesman for Dexus - the owners of the Waterfront Place building - said no one was injured by the smashed glass panel.

"The building management team was aware of the protest and secured access to the building. No protesters entered the building," the spokesman told AAP.

"Building management is working with Queensland Police in regard to the property damage."

A police spokeswoman said they have received no reports on the smashed door.

BUY 20L OR MORE OF



Delo[®]

CALTEX

AND GET A
5L BOTTLE
OF TRUCK
WASH FREE!*



*While stocks last



iOR

ORDER NOW!

GLADSTONE & ROCKHAMPTON - 07 3895 4476
EMERALD - 07 4982 1624

Manufacturing future bright

Central Queensland's agriculture and manufacturing future has been strengthened after the Federal Government's \$15 billion National Reconstruction Fund was passed by the Parliament this week.

The program was a Labor election commitment to boost Australian-made manufacturing and help to grow the industry.

The Fund will target \$500 million for value adding projects in the agriculture sector, and will also prioritise support for medical manufacturing, transport, resources, defence capability and renewables and low emissions technologies.

Minister for Agriculture, Fisheries and Forestry and Senator for Queensland Murray Watt welcomed the fund and said businesses had shown great interest in using it to hire more staff and expand their product range.

"This is going to super-charge high-tech manufacturing in CQ and open up great local job opportunities," Senator Watt said.

"By making more here, we can supply local demand, while also growing both domestic and international markets for our high-quality products.

"In Central Queensland there are great opportunities to invest in the manufacturing that underpins important local industries like food production, mining, renewables, agriculture and many more.

"I'm particularly pleased to see agriculture recognised as a priority area. We know that by making more on Aussie soil, including technology, fertilisers and feed supplements, we can avoid some of the risks we've experienced lately with global supply shortages and the war in Ukraine.

"We've seen Australian manufacturing crumble under a decade of Coalition neglect, and I'm very pleased that this Government is committed to reversing that damage and delivering for Queensland."

Senator for Queensland Nita Green was she was proud to be part of a Government that pri-



Senator Murray Watt (right) with Prime Minister Anthony Albanese at a recent visit to Rockhampton.

oritises manufacturing.

"We need to bring manufacturing back home to regional Queensland, and that is ex-

actly what our Government is doing - creating good, secure local jobs for the communities across Central Queensland."

For more information on the National Reconstruction Fund, visit the Department of Industry, Science and Resources website.

Groeneveld CQ servicing Central, Northern and Western Queensland

Automatic Lubrication Solutions for:

- Transport
- Earthmoving
- Agricultural
- Fixed plant

Groeneveld and Bekamax, part of the Timken Group, two tried and tested brands now under the one roof.

1280776-ET11-23

Contact Russel Ostwald
0418 744 644
r.ostwald@groeneveld-group.com

GROENEVELD-BEKA
LUBRICATION SYSTEMS BY TIMKEN



12561007-WJ99-22

GLADSTONE
Garden & Landscaping Supplies
07 4975 7214

CONTACT YOUR CQ STOCKIST



07 4936 1232



07 4938 3077



0418 542 961

sales@capricornsandstone.com.au

Women of Steel rescuers

Queensland's first-ever all-female Mines Rescue Team has been formed at Anglo American's Capcoal Open Cut Mine, near Middledmount, and is set to join the state's competitive Mines Rescue Open Cut Circuit.

Known as the Women of Steel, the team is made up of seven women who are now in training for the QMRS Mines Rescue Challenge later this year.

Team captain and Capcoal Open Cut's Emergency Response Team Coordinator, Kiri Blanch, has been looking to put together an all-female team for some time.

"Our team is a dedicated group of women who really gel together, and we're proud to be the first Anglo American and Queensland-based all-women team in the Queensland competition," she said.

"Everyone has been very supportive, especially our male counterparts. It's a reflection of the culture at our site that continues to both support mines rescue and empower the women we work with.

"This has inspired our team to commit to the challenge, improve our health and fitness and achieve the best results possible whilst representing women in mining. We will train closely with the Capcoal Open Cut men's team and support each other during competitions."

CEO of Anglo American in Australia, Dan van der Westhuizen, said the team had the backing of all their colleagues across the company.

"We're so pleased to support this outstanding group of women as they get set to make a real mark on Queensland's mines rescue circuit," Mr van der Westhuizen said.

"Although we still have further to go, it's a strong example of how our industry and our operations are moving towards achieving



Capcoal Open Cut Mine's Women of Steel (back row left to right): Jamie-Lee Swithenbank-Mant, Kiri Sullivan, Kiri Blanch (Capt), Raewyn Ryniker, Paige Sudholz. (front row left to right): Caroline Moore and Hollie Farrell.

equal representation and equality.

"At Anglo American, we have a strong history of supporting our highly competitive mines rescue teams across both our open cut

and underground operations, so it's particularly pleasing that our Women of Steel are now Queensland's first all-female team.

"Our mines rescue teams play a critical

role in any incident response or rescue, and these competitions help ensure their skills are well honed, if called upon to undertake a rescue."

Construction starts on \$3 billion Clarke Creek power

Windlab, a global renewable energy development company owned by Squadron Energy, are presented their Queensland projects including the Clarke Creek Wind, Solar, and Battery Farm at a luncheon in Gladstone last month.

Along with the windfarm, construction has begun on the \$3 billion Clarke Creek renewable energy precinct in Central Queensland, which will deliver crucial capacity as Australia transitions to the green energy economy.

Stage One of the project will deliver 100 wind turbines that will produce around 450MW of green energy by 2025, of which 346.5MW will supply the Stanwell Corporation.

Event organiser, Connecting Industry Managing Director Kieran Moran said Queensland is being recognised globally as an ideal location for Renewable Energy Zones (REZ).

"When fully operational, Clarke Creek will displace enormous amounts of carbon each

year by harnessing the renewable energy of the wind and sun to power our homes and commercial premises.

"Guest speaker at the luncheon is Windlab Head of Construction John Burke. The strategic focus of the luncheon is to not only highlight Windlab's and Squadron Energy's business and procurement opportunities to assist the supply chain in their planning for future work opportunities, but to also allow the resource and construction supply chain throughout Queensland get the right information and make informed choices," Mr Moran said.

The Connecting Industry Luncheon was held at the Yaralla Sports Club in Gladstone on 22 March.

The 28 tonne, 76.3m long wind turbine blades were delivered to port of Gladstone and are awaiting transport to the Clarke Creek Wind, Solar and Battery Farm 150km Northeast of Rockhampton. Picture: SUPPLIED



Stokes
MINING

Safety Attitude
 Production

12590766-ET11-23

1800 HOSE VAN
HYDRAULIC & INDUSTRIAL HOSE SERVICES

Gates

HYDRAULIC HOSE SERVICES & REPAIR

MegaDye® 1800 MegaD000™

12586759-A104-23

Air partnership secured

By RACQ CapRescue

With an emphasis on supporting the local community, Santos GLNG has proudly partnered with RACQ CapRescue for over ten years and just committed to a further three years of support.

Their ongoing financial contribution ensures our vital lifesaving aeromedical service continues to operate not only for industry usage but also for the residents of Central Queensland.

Our rescue area covers over 350,000 km², which is home to approximately 300,000 people, including the residents of the Gladstone region, that have come to trust in the RACQ CapRescue service.

From the first of January 2020 to March 2023, CapRescue, with the support of Santos GLNG, has performed 300 rescues in the Gladstone region at an operational cost of almost \$6M.

Notably, from 2020 to 2021, the number of tasks in the area doubled.

"Santos GLNG is proud to extend our partnership with RACQ CapRescue to secure this vital service for the people of central Queensland," Santos GLNG Chief Executive Officer Stephen Harty said.

"Our partnership with RACQ CapRescue helps ensure we deliver on our commitment to making a positive and lasting impact within the communities we operate."

"Inter-hospital transfers have been on the rise, and other tasks can range from incidents on remote work sites, mountains, farms, motor vehicle and boating accidents and search and rescue missions," RACQ CapRescue's Operations Manager Kirsty Wooler said.

Santos GLNG's support of Central Queensland is strong, as an Australian-owned and operated business, they are committed to building and maintaining mutually beneficial



Babcock Capricornia.

Picture: SUPPLIED

relationships with local communities wherever they operate.

This is delivered through their community sponsorships to help ensure that their region

can share in the benefits of natural gas development.

"This corporate partnership with Santos GLNG is a clear representation of their mis-

sion to benefit the community they work in," Mrs Wooler said. "We are grateful that they are helping to ensure RACQ CapRescue is able to keep flying, 24/7, 365 days a year."



Gladstone Ports Corporation an Employer of choice.

Grow, prosper and be empowered!

gpcl.com.au | 1800 243 GPC (472) | 



**Gladstone Ports
Corporation**

Growth, prosperity, community.

Should you identify as CQ



By ASPIRE CQ with Warren Acutt

Is it expediency, or the lack of cities, that the nightly Channel 9 News weather report divides the state into two, 'in the 'north of the state ...', then in 'the south of the state'?

What ever happened to the centre of the state, Central Queensland?

Who cares? But it's Central Queensland that effectively powers the rest of the state, with its cattle, coal, grain, cotton and ports. Should that not give CQ individual recognition?

Where does Central Queensland start and stop? Of course that can start an argument in Mackay, Bundaberg, even Longreach west.

Are they, respectively, North Queensland, Wide Bay or The Outback, rather than Central Queensland?

Without a recognised border can one even identify as a Central Queenslander?

For some, CQ's ambiguous borders can be as close to the coast as the Drummond Range.

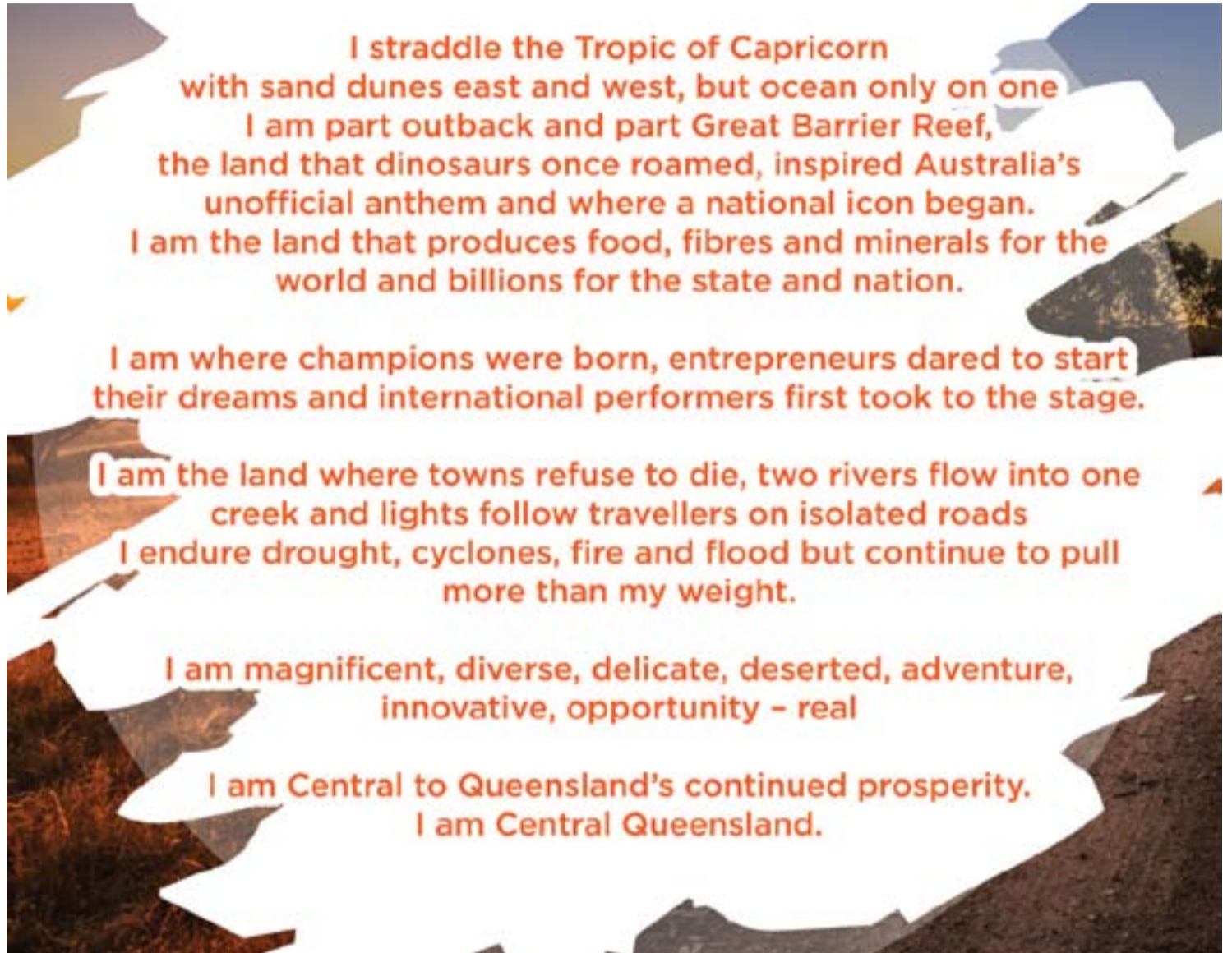
And those west of the Drummond possibly do feel a greater affinity with all regions on that side, north and south, than they do with the east side of the range.

Which arguably makes it easier to not identify Central Queensland, even forget it, when talking about the state.

After all north of the state support the Cowboys, south the Bronco's, why complicate region identification more than that! (Sorry Titans and Dolphins).

Without a separate identity though, don't we risk missing out on more?

More infrastructure, like a new boat harbour on the Capricorn Coast, more clout in Brisbane and Canberra, more done to fix our highways, more events like our own Supercars race, more educational options for our children, more medical services in smaller towns.



An Ode to CQ

Perhaps, one day, even our own NRL team.

At best, arguably, Central Queensland is the second cousin sitting at the table that is Queensland; what's your name and where do you come from again, yes, yes, I've have driven through or flown over it once or twice!

Do you we contribute to this indifference,

by not identifying ourselves as Central Queenslanders though?

Just happy to identify with the town we were born and/or live in, then three times a year scream out that we are a Queenslander.

And when the gold and green does well on the international stage, proudly profess to be

Ozstrayan, though unsure about the words in the second chorus of our national anthem.

If we don't identify as being Central Queenslanders though, why should anyone outside believe this unique part of our state deserves individual attention, separate funding, more infrastructure, least of all, separate identification on a weather map.

Chance for industries to network at GEA expo in April

Just two weeks until the annual GEA Supply Chain Expo, proudly presented by Australia Pacific LNG, operated by ConocoPhillips Australia returns to Central Queensland.

A big thank you goes out to our committed supporters including BK Recycling, Stanwell CQ-H2, Bartec, Gladstone Industry Leadership Group and Marcem Specialist Equipment Solutions.

The Gladstone Engineering Alliance is pleased to announce that Meet the Buyer speed "dating" will be taking place again this year.

More information regarding the 2023 buyers and registrations will be released soon.

Stallholders at this year's GEA Supply Chain Expo, along with GEA members will have a unique opportunity to sit down and

talk face-to-face with specialists from some of Gladstone's large industries and Tier 1 companies.

The "Meet the Buyer" provides stallholders and GEA members access to these companies, allowing them to pitch their businesses' services and products, identify how to connect with future procurement opportunities being offered or ask questions related to the companies' procurement processes. The

number interviews available are limited and will be offered on a first-in, first-served basis.

- Date: Thursday, 27 April
- Time: 8am - 3pm
- Attendance: In person
- Venue: Gladstone Entertainment Convention Centre

For more information, visit the GEA website.

RECRUITMENT SOLUTIONS

Embedded in Rockhampton & Central QLD Community.

Local team providing solutions to your recruitment challenges.

25 YEARS IN CENTRAL QLD

CONTACT ANGELA & HER TEAM TODAY
07 4924 9600 | aolsen@ipa.com.au

WWW.IPA.COM.AU



Member for Capricornia Michelle Landry and Rockhampton Region Mayor Tony Williams.

Picture: SUPPLIED

Delivering workforce program

The Queensland Resources Council (QRC) has welcomed Queensland Government funding for an initiative to address skills shortages and create job opportunities for groups under-represented in the mining and energy workforce.

Heralding a period of systemic change for the sector, QRC Chief Executive Ian Macfarlane said the \$963,000 made available through the Workforce Connect Fund will support the QRC's new Resources W.I.D.E (Workforce Inclusion & Diversity Engagement) project.

"Resources W.I.D.E offers benefits to job seekers from under-represented backgrounds and to employers in the resources sector facing the challenge of attracting and retaining skilled workers," Mr Macfarlane said.

"This program targets women, Indigenous Australians, people from culturally diverse backgrounds, veterans, refugees, and neurodiverse people who are looking for employment in the resources and energy sector in Queensland.

"The QRC will work with organisations like CQUniversity, Queensland Social Enterprise Council and the Indigenous representative bodies to help 100 job seekers in these under-represented groups and 220 employers to connect.

"The project will help resources companies and small to medium-sized enterprises implement diversity and inclusion initiatives that will open up employment opportunities for groups who have not been traditionally represented in the industry."

Underpinned by evidence-based research by CQUniversity, the QRC's Resources W.I.D.E Digital Hub will house practical ideas, tools and connections to a range of services in a way that is easily accessible to companies wishing to implement diversity and inclusion programs.

"This funding will help address the urgent need for new solutions to the current skills shortage in the resources sector and open up opportunities for a wider range of people in the community to join our workforce," Mr Macfarlane said.

"The project will help mining and energy companies determine the why, what and how more under-represented groups can be successfully employed and retained in supportive workforce environments which embraces, respects and connects employees from all kinds of backgrounds."

Bravus' new office

Bravus Mining and Resources has celebrated its enduring commitment to Rockhampton with the official opening of its new CBD office.

Bravus Mining and Resources Chief Operating Officer Mick Crowe said the new Victoria Parade premises brought the Rocky team into the heart of the city and provided a fit-for-purpose space from which the business would continue to recruit local people and engage local contractors as the Carmichael mine moved from strength to strength in operations.

"The Rockhampton Region was invaluable to our business throughout the construction of the mine and rail projects, and the city's role hasn't changed now that we're in operations," Mr Crowe said.

"Being able to tap into the expertise of local businesses is critical to being a sustainable, long-term industry, and the work the likes of CQG Consulting, SMW Group, Woongal Environmental Services, TRM Fencing, and Stresscrete do for us is a great example of Rockhampton's value-add to our operation.

"During construction, we paid more than \$80 million directly to Rockhampton contractors. Now we operate 18 flights a week through our airline partners to carry people from this region to work at the mine.

"We're excited to give our team a new workspace that lets them take advantage of all the Rockhampton CBD has to offer, and we're proud to see our business name sit atop our building as a sign of our commitment to this community."

Rockhampton Region Mayor Tony Williams said mining and resources were an important part of the regional economy.

"It's great to watch Bravus grow over the years and become a key player in our Region," Mayor Williams said.



The Bravus Mining and Resources logo sitting proudly atop the new office.

"I proudly welcome them into their new building in the heart of our CBD, which reflects the positive growth of this company, and I also

thank them for their continued contribution towards our local community groups and organisations."



smwgroup

smwgroup.com.au

**GET INTO MINING:
NO EXPERIENCE NEEDED**

NOW HIRING INFRASTRUCTURE TECHNICIANS

WWW.SMWGROUP.COM.AU/JOBS

Containers help choppers

A recycling program in use at the Carmichael mine near Clermont in central Queensland is helping keep the region's lifesaving RACQ CQ Rescue helicopter flying.

Bravus Mining and Resources has donated close to \$50,000 to RACQ CQ Rescue this year from money raised via the Change for Choppers program, which cashes in cans and bottles collected at its Carmichael mine.

Bravus Mining and Resources Chief Operating Officer Mick Crowe said the success of the program was due to its simplicity, and a hungry and thirsty workforce.

"We've been proudly supporting RACQ CQ Rescue since 2018 as we recognise the organisation's critical role as a lifesaving service not only for our workforce, but for our broader community," Mr Crowe said.

"The Change for Choppers recycling program is a natural extension of that successful partnership, and it's something we'd strongly encourage other local businesses to get behind.

"Mackay-based group Anything Environmental developed the program and they do the heavy lifting for us. They put the bins in place, collect the recyclable materials, and tally up the donation – all of which goes to RACQ CQ Rescue.

"Our people are enthusiastic about doing what they can to reduce, reuse, and recycle on site, and Change for Choppers makes it as simple as putting the right thing in the right bin.

"The result is an extra \$50,000 donated to keep our only local rescue helicopter flying, in addition to the other support we give as part of our Community Partnerships Program."

RACQ CQ Rescue CEO Tim Healee said the community was indebted to corporate partners like Bravus Mining and Resources who, through campaigns like Change for Choppers, assisted the not-for-profit service which was vital to the sick and injured within central and north Queensland.



Bravus Mining and Resources COO Mick Crowe with RACQ CQ Rescue aircrewmembers Grant Bollington and Ben McCauley.

"We are incredibly fortunate to have such vital support from the community which ensures we can have a world-class aeromedical helicopter service on our doorstep and available anywhere, anytime throughout central Queensland," Mr Healee said.

"RACQ CQ Rescue is a vital part of emergency support for all residents, visitors and workers in this region and it's reassuring to know corporate organisations like Bravus appreciate the value of supporting our helicopter

and that with their support we can continue to provide our vital, lifesaving service to anyone in a time of crisis.

"The reality is we rely heavily on sponsorships and donations, so community and corporate support is vital to keeping the helicopter available 24 hours a day, seven days a week and ready to respond to emergencies at a moment's notice."

Mr Healee said CQ Rescue's operational expenses would be in the vicinity of \$11.5 million

in 2023, with more than half of this amount being contributed from sponsorships, corporate donations, workplace giving, events and community contributions.

"With the rescue helicopter's workload increasing annually, last year clocking up a record 638 tasks, it was a reflection of the ever-growing necessity for such a lifesaving organisation which serviced an area more than four times the size of Tasmania," he said.

TAKE THE LEAD



Mention you saw this ad in Industry Today to receive 15% off TJM SNORKELS!

P: 07 4927 6844 | W: www.tjm.com.au | E: sales@laceystjm.com | A: 212 Denison Street, Rockhampton, QLD

Students mine pit to port

Gladstone students explored what it takes to get resources out of the ground and into the global supply chain at a Pit to Port workshop facilitated by the Queensland Minerals and Energy Academy (QMEA) last month.

Thanks to support from ConocoPhillips Australia, as downstream operator of Australia Pacific LNG (APLNG), Pit to Port sees students from local high schools learn about three different aspects of the resources industry value chain - and in doing so, better understand career opportunities within the resources sector and how these roles are changing for the future.

QRC Director of Skills, Education and Diversity, Ms Katrina-Lee Jones said the workshop illustrates the various steps needed to deliver Queensland's high-quality commodities to Europe, Asia, South America, and North America.

"Students are getting hands-on experience in tasks relating to management of the wharf, ships, tides and tugs, and are learning how to manage an export order with a fleet of trucks," Ms Jones said.

"These exciting and dynamic activities are showing students the array of processes involved in exporting resources from Gladstone harbour, including cost analysis, demonstrating the different roles necessary to reach the export phase."

The full-day workshop is being held at Central Queensland University's (CQU) Marina Campus in Gladstone, where students from Chanel College, Toolooa, Gladstone, Calliope and Tannum Sands state high schools will be mentored by resources and energy sector professionals from APLNG.

Manager of Communities and Sustainable Development at ConocoPhillips Australia, Mr Robert Gibb said that the creative workshop activities with resources and energy industry context stems from APLNG's demonstrated expertise in best-practice supply chain management.



Students from Chanel College, Toolooa, Gladstone, Calliope and Tannum Sands state high schools workshopped at the CQU Marina Campus.

"This is the perfect opportunity for students to gain an understanding of the complexities involved in exporting our products to global destinations and to be involved in some real-world problem solving," Mr Gibb said.

"With guidance from experienced industry mentors, students are participating in interactive tasks in fleet management, workplace health and safety, and harbour management and operations."

Toolooa State High School Principal, Mr Justin Harrison said the experience helps to translate an intricate system with complex moving parts, operating in their own backyard, to an easily digestible classroom exercise.

"The opportunity for our students to work alongside knowledgeable professionals from our local resources sector is greatly valued and highlights the opportunities that exist in their hometowns," Mr Harrison said.

The academy encourages a talent pipeline of employees into vocational and professional careers, with a focus on female and Indigenous participation.

The QMEA currently engages with 90 schools and is a partnership between the QRC and the Queensland Government under its Gateway to Industry Schools program.



Students check out real-world gear with Alfie Little from Orica.

Pictures: QMEA

FULCRUM Rockhampton & Active Gear Rockhampton
102 Elphinstone St,
Rockhampton
(07) 4921 3998



Robo's Tyre Works
4 Wandal Rd,
Sth Rockhampton
(07) 4927 3360

Tom Leyden Tyres & Mechanical
11 O'Shanesy St,
Gracemere
(07) 4933 1395



Lovells GVM Upgrades
 - carry more legally
Brakes & Axle loads checked
Vehicle Warranty not affected
Safer driving and towing



Dash Offroad Stockist
Bushwakka 270° Awnings
ECB Bullbars
Campboss Recovery Gear
Torqit Exhausts
WE FIT WHAT WE SELL!



Tyres for Mining, Commercial, Rural + Heavy Industry Tyres
Light Truck Tyres
Tractor & Quad Tyres
Mower Tyres
Fleet & Lease Vehicles & Wheel maintenance
Major Tyre Repairs
Mine Spec Rims
Log Book Servicing
ALL MAJOR TYRE BRANDS



Think Robo's Group
FOR EVERYTHING AUTO

SERVING ROCKHAMPTON FOR OVER 30 YEARS | WWW.ROBOSGROUP.COM.AU



Oresome Trades camp

Students in Years 11 and 12 from Dysart, Moranbah, Mackay, and Northern Beaches were able to get their hands on the tools to build their own model mine site vehicle with BHP Mitsubishi Alliance and the Queensland Minerals and Energy Academy delivering an educational experience.



SLH
Specialised Labour Hire

DELIVERING OUR FUTURE

ENQUIRIES CONTACT TAYLAH
0498 636 547
SUIT 8/110 CAMPBELL ST. ROCKHAMPTON 4700

ROCKHAMPTON MACKAY GLADSTONE BRISBANE



Rio Tinto open on water use

Rio Tinto is marking World Water Day 2023 by making public detailed information about annual surface water usage across its global network of managed sites in 35 countries, through an interactive map on its website riotinto.com/water.

For each managed site included, the database details permitted surface water allocation volumes, the site's annual allocation usage and the associated catchment runoff from average annual rainfall estimate.

The database includes five-year historic comparative data and will be updated annually.

In 2019 Rio Tinto made a commitment to drive good water stewardship and improve disclosure to stakeholders, by publishing site-by-site surface water usage data for all managed sites by the end of 2023.

This commitment is in line with the water reporting guidelines of the International Council on Mining and Metals (ICMM) Water Stewardship Position Statement, which sets out ICMM members' approach to water stewardship.

It includes commitments requiring members to apply strong and transparent water governance, manage water at operations effectively, and collaborate to achieve responsible and sustainable water use.

Rio Tinto Chief Executive Jakob Stausholm said water is an essential resource, critical to sustaining biodiversity, people, and economic prosperity.

"It is also a resource we share with the communities and nature surrounding our operations, so it is essential that we carefully manage our use and hold ourselves accountable to our stakeholders," Mr Stausholm said.

"This interactive database brings a new level of transparency and will enable us to engage more deeply with our stakeholders, seek their feedback on our disclosure and continue to focus our efforts on becoming better water stewards for today and future generations.

"Sharing water with communities and nature surrounding operations means balancing operational needs with those of the local communities and ecosystems.

"Rio Tinto aims to avoid permanent impacts on water resources by carefully managing the quality and quantity of the water used and returned to the environment.



The environmental improvement programme forms part of the Queensland Alumina Limited business plan and has been prepared in consultation with our employees, joint venture owners, Rio Tinto and Rusal and informed by feedback from the Gladstone community and government bodies.

Picture: SUPPLIED

"We will look to incorporate future water and broader environmental disclosures within this platform."

The interactive platform and full details of Rio Tinto's approach to water are available at riotinto.com/water. The latest Rio Tinto sus-

tainability disclosures are available in the 2022 Sustainability Fact Book at riotinto.com/sustainabilityreporting.

Net cast wide for fisheries working group members

Queenslanders with an interest in sustainable management of our fisheries are urged to submit an application to join a fishery working group.

Fisheries Queensland Executive Director Dallas D'Silva, said nominations are open for membership of 14 fishery working groups, which are integral to delivering world-class, sustainable fisheries.

"This is an exciting opportunity to be part

of sustainable fisheries management," Mr D'Silva said.

"Fishery working groups provide important operational advice on the management of specific fisheries and serve as an effective communication and consultative forum between fishing stakeholders and the Queensland Government."

"We are seeking a range of people to join the fishery working groups, including com-

mercial and recreational fishers, charter operators, seafood marketers and processors, conservation representatives and First Nations peoples."

Mr D'Silva said the working groups have been very effective in developing harvest strategies, and their operational knowledge and advice have been invaluable.

"Under the Sustainable Fisheries Strategy, working group membership is renewed every

two years. We have also reviewed the fishery working groups guideline and released it for public consultation."

Applications to join the fishery working groups are due by 21 May 2023, and consultation on the working groups guideline also closes 21 May 2023.

To nominate for the working groups and provide feedback on the guidelines, visit daf.engagementhub.com.au.



Here for Gladstone

Proudly growing Gladstone together for over 20 years.

Here for Gladstone



Driving down emissions

By Robyn Wuth, AAP

Queensland farmers are being urged to start acting on emissions reductions and avoid costs and disruptions in the future, as the state releases its low-emissions agriculture road map.

Five key areas are outlined in the plan released on Tuesday: livestock emissions; cropping and horticulture emissions; energy opportunities; carbon farming and landscape management; and regional supply chains.

It will include industry-led research into methane-reduction stock feeds for livestock and the development of green fertiliser options.

Farmers will also be encouraged to be aware of alternative fuels and electricity infrastructure that help reduce greenhouse gas emissions.

The industry will play an essential role if the state is to reach its net zero commitment by 2050, Agriculture Minister Mark Furner says.

"Those who implement plans to lower greenhouse gas emissions now will have fewer transition costs and disruption to their business than those who delay and find themselves urgently responding to market forces," he said.

"The aim is to provide a structured, smooth transition while minimising dramatic changes."

Different industries in the agriculture sector are at various stages of developing and implementing emissions reduction targets.

"There are winners all around not only for reductions in savings of what you can do by transitioning out of fossil fuel into solar power ... also looking at increases in productivity, but also savings in dollars well spent," Mr Furner said.

"The decision to act now is the right time, to delay it will only cost more - we're encouraging

people to consider the road map, to look at the future ahead of them."

Queensland's agriculture industry is ready to embrace new practices and technologies to ensure the long-term sustainability of their sector, says AgForce chief executive Mike Guerin.

"As proud and responsible contributors to the state's economy, we recognise the importance of supporting the road map and doing what we can to lower emissions to promote long-term sustainability," Mr Guerin said.

Queensland Farmers Federation chief executive Jo Sheppard said the industry strove to respond to global demand for a transition to low-emissions production.

"The road map will help co-ordinate some of the messaging in what is becoming an increasingly crowded marketplace," she said.

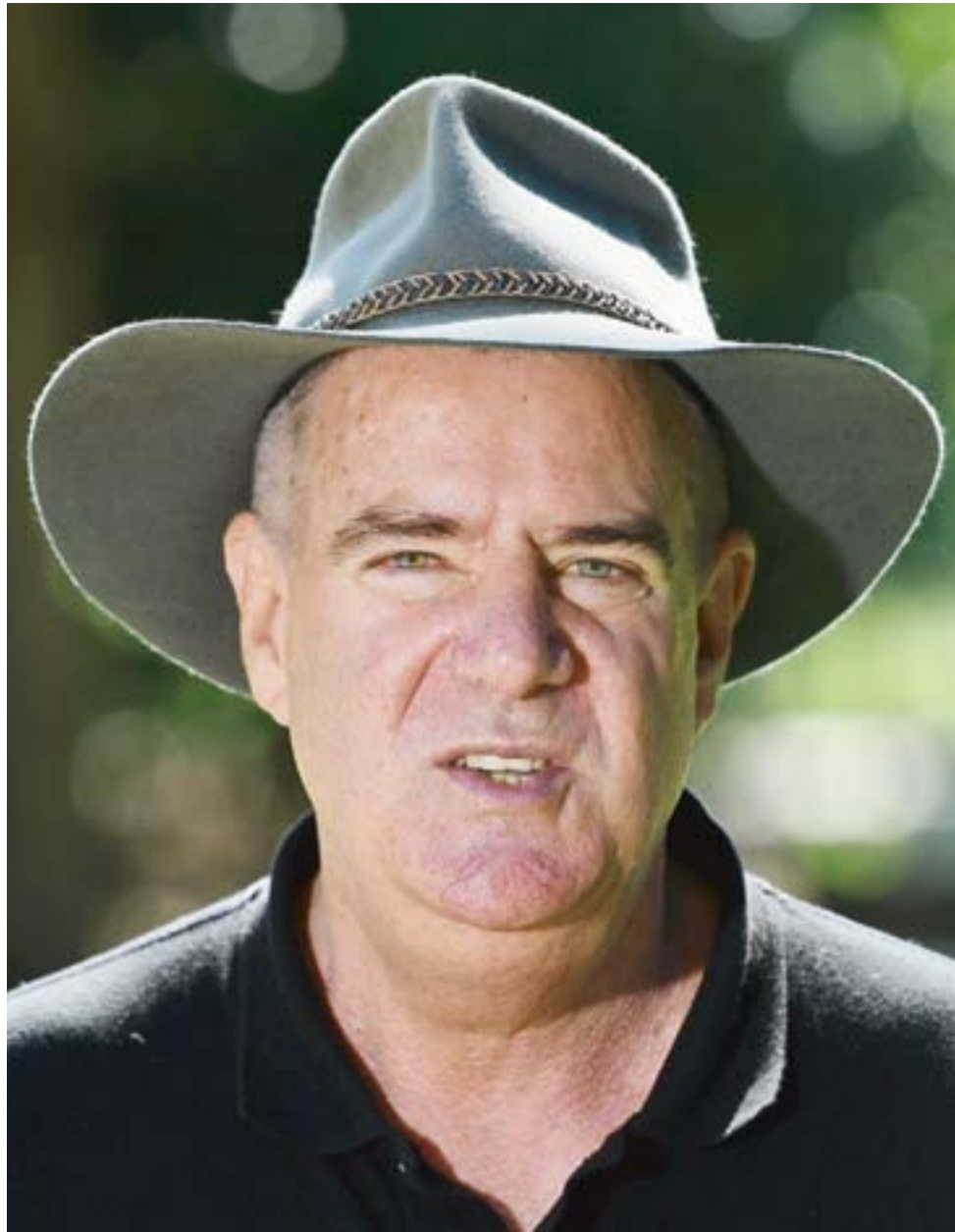
"A strong agriculture sector is important to us all, and we need to make sure that farmers are supported to achieve environmental outcomes, while still being able to do what they do best in producing the world's best food, fibre and foliage."

However, the Queensland Conservation Council dismissed the road map as "inadequate" in reducing emissions in an industry that together with the land use sector, it says is responsible for 20 per cent of the state's total emissions.

"This roadmap has no targets for emissions reductions for a fifth of Queensland's emissions," QCC director Dave Copeman said.

"When it comes to agriculture, the Queensland government is actively avoiding taking climate action seriously."

The road map will be reviewed in 2028, to ensure it remains current and relevant.



Mark Furner says the Queensland agriculture industry will play a huge role in cutting emissions. Picture: DARREN ENGLAND, AAP

WB WATERBOY

FAIR DINKUM SOLAR PUMPS

Pump Model:	3HRSS-H
2 x 370-Watt Panel Post Mount System.	9000 Ltrs Per Day at Total Head of 30 Mtrs.
Total System Price, Automatic, to top of bore:	"Complete. \$4990 incl GST

Pump Model:	4HRSS
2 x 370-Watt Panel Post Mount System.	14,000 Ltrs Per Day at Total Head of 30 Mtrs.
Total System price, Automatic, to top of bore:	"Complete. \$5290 incl GST

Pump Model:	4HRSS-H
4 x 330 -Watt Panel Post Mount System.	18,000 Ltrs Per Day at Total Head of 30 Mtrs.
Total System Price, Automatic to top of bore:	"Complete. \$7535 incl GST

Note: All models come complete with Low Water Probe Protection, as standard inclusion.

All WATERBOY Solar Pumps are available Ex Stock our Rockhampton Store. Call for Freight Costs to nearest town.

Building sustainable future

The peak national body representing the building and construction industry has taken another step in its commitment to a sustainable built environment by joining the Australian Sustainable Built Environment Council (ASBEC).

Master Builders Australia CEO Denita Wawn says the industry is committed to meeting its net zero obligations and is formalising partnerships with key stakeholders to better utilise the network of expertise on critical policy reform areas.

“The transition to a net zero built environment is one of the most significant policy reform areas impacting building and construction and the future direction of the sector,” Ms Wawn said.

“Building a sustainable future requires a collective effort from all stakeholders, and the building and construction industry has a crucial role to play in achieving this goal.

“Master Builders has committed to supporting this agenda with three essential factors that need to be in place to support this transition such as mitigation of risks in the transition journey, suitable information and education resources developed to support industry transformation, and adequate transition timeframes to enable the sector to effectively transition.

ASBEC Executive Director Alison Scotland welcomed Master Builders Australia to the collaborative industry network, saying it will add immense value to ASBEC’s work.

“This partnership will enable Master Builders to contribute to and participate in the collective efforts of built environment stakeholders in shaping policy and boosting sector capability that helps deliver more sustainable, decarbonised communities, effective regulation, codes and standards, and that improves Australia’s new and existing building stock,” Ms Scotland said.

Key priorities that Master Builders would



According to Master Builders Australia and Australian Sustainable Built Environment Council, a sustainable built environment is imperative for the future of the industry. Picture: SUPPLIED

like to see more work on include:

- Skilling the sector for energy transformation.
- Retrofitting and improving existing building stock.
- A plan for decarbonisation of building products and product assurance.
- Developing resources that raise awareness about risks from regulatory change, such as moisture management and how to deal with it.
- Addressing conflicts in the National Construction Code (NCC) between existing and new building requirements.

construction Code (NCC) between existing and new building requirements.

“By addressing these priorities, we can create a more sustainable built environment that benefits both the industry and the wider community,” Ms Wawn said.

GET ON BOARD A TALL SHIP WINDEWARD BOUND IS SETTING SAIL

Applications are open from all interested and adventurous young people to join us for one of these amazing life changing opportunities.



VOYAGE 1
Bundaberg to Gladstone,
then Gladstone to
Bundaberg in June & July

**COMMIT YOURSELF NOW AND
BE PART OF THE EXCITEMENT**

**13 - 17 year old's welcome
All areas welcome aboard.**

**BE AT THE CENTRE OF THE ACTION -
BOOK NOW**



DON'T MISS OUT LIMITED BERTHS AVAILABLE
Cut Off Date - 15th June

DON'T MISS THIS LIFETIME OPPORTUNITY

To find out more contact Marilyn Ph: 0499 557 422 or
email Dave - dave.shauna@bigpond.com

Barty backs Aussie made

She's a former Young Australian of the Year, an Australian Open, French Open and Wimbledon champion, and has excelled in other endeavours, including golf, cricket and as an author, role model and a proud Ngarigo woman.

Now Ash Barty is serving one of her most patriotic points yet as the ambassador for Australian Made Week 2023 (15–21 May).

Ash will be representing Australia as she highlights how seeking out and buying products bearing the Australian Made logo supports local growers, producers and businesses and benefits the Australian economy.

Ash said buying goods and produce made in Australia also comes with an added feel-good factor.

"There are so many benefits to buying Australian made, including creating and supporting local jobs and boosting the economies of cities and towns where the goods are produced," she said.

"There's a huge amount of choice when it comes to local goods, plus you can buy with confidence knowing that goods carrying the Australian Made logo have been grown and manufactured locally to Australia's high standards.

"I grew up on some iconic Aussie brands, so I'm incredibly excited to have this opportunity to be part of the Australian Made campaign and spread the word about homegrown favourites and newcomers. Having travelled the world, I feel so much pride in our country and the high-quality goods it produces.

"Nothing would make me happier than knowing my involvement in Australian Made Week had encouraged people to support our wonderful country."

The latest figures from Roy Morgan Research show Australians are as committed as they've ever been to supporting local manufacturing and production.

Four in five (86 per cent) say buying Australian is important to them, while 67&percent;



Ash Barty is the ambassador for Australian Made Week 2023.

Picture: SUPPLIED

state they 'often' or 'always' buy Australian-made products.

Impressively, 99 per cent of Australians aged 18 and over are aware of the Australian Made logo.

Australian Made Chief Executive Ben Lazzaro says he couldn't think of anyone better to draw attention to Australian Made Week and help push that recognition to 100 per cent than Ash.

"This is a great time to remind everyone about the direct economic impact buying Aus-

tralian can have on the livelihoods of thousands of Australians throughout the supply chain," Ben said.

"Ash is the perfect ambassador to highlight the best this country has to offer. She is an inspiration and loved by Australians. She has a long-standing history of supporting Australian Made brands including Vegemite and Esmi Skin Minerals, so working with Australian Made is a natural extension of this.

"There's an Australian Made option in just

about every product category you can think of, from high-end health and beauty products to industrial materials.

"During Australian Made Week, we'll be highlighting the stories of some of the people behind the more than 4,400 businesses that consider their Australian Made certification a badge of honour."

Keep your eyes out for the Australian Made, Australian Grown green-and-gold logo, Australia's most trusted, recognised and widely used country of origin symbol.

Forum discusses Fitzroy to Gladstone pipeline project

Central Queensland businesses turned up in strong numbers recently to hear about the Fitzroy to Gladstone Pipeline Project briefings delivered by the McConnell Dowell BMD Joint Venture.

Over 120 people attended the 27 March briefing organised by the Gladstone Engineering Alliance (GEA) and over 160 at the event at the 28 March briefing organised by Advance Rockhampton.

Members of the various industry bodies including Capricorn Enterprise and Capricorn Chamber of Commerce raised questions at the briefings on local content, project timing and accommodation for the workers.

Local firm CQG Consulting is engaged by the JV to manage stakeholder and community engagement for the project which will be beneficial for local businesses and Indigenous businesses.

CQG's Founder Patrice Brown was instrumental in ensuring strong local content and importantly Traditional Owner and Indigenous business content in Defence's \$1.2B ASMTI project at Shoalwater Bay Training Area in recent years.

Patrice said the Gladstone Area Water Board and the JV have clearly demonstrated their commitment to engage local businesses on this \$983 M project.

During the briefings, Ms Brown reminded businesses to do their homework on the key tender assessment criteria, ensure their businesses are project ready and to collaborate with other businesses if necessary to put their best foot forward.

More information on the project can be found on www.gawb.qld.gov.au and registrations of interest emailed to fgpprocedure@mbjv.com.au



Over 120 people attended the briefing about the Fitzroy to Gladstone Pipeline Project.

Picture: SUPPLIED



CQG is a passionate advocate for local businesses

Rockhampton | Gladstone | Brisbane | Mackay | Townsville

www.cqgroup.com.au • +617 4922 9252





Developing a cuts-based grading model for the lamb industry.



MSA Program Manager David Packer said the move will improve industry and consumer outcomes.

Model to improve industry

Meat Standards Australia (MSA) in partnership with key research organisations is breaking new ground in developing a cuts-based grading model for the lamb industry that will pave the way for greater value generation through segregation of cuts based on quality.

The beef MSA program led to dramatic improvements in consumer satisfaction and how processors and brand owners market their products.

The same benefits are set to come to the lamb industry through the commercialisation of the MSA sheep meat cuts-based model, according to MSA Program Manager David Packer.

"At the moment the majority of lamb being processed is all going into the same box because there is no system to identify and differentiate lamb on eating quality, enabling it to be marketed at different price points," Dr Packer said.

"If we take the beef industry as an example, in the 1990s prior to the MSA program there was significant variation in eating quality and consumer satisfaction was dwindling. Through the industry-wide adoption of the MSA beef program, consistency in eating quality improved markedly, enabling MSA to capture greater value through underpinning consistency for nearly 200 beef brands."

Dr Packer said a pathways MSA system for lamb had been in place for about a decade, which focussed on critical control points, such as ensuring lambs were finished to target specifications (fat score over 2 and GR fat greater than 6mm) and on using interventions such as

electrical stimulation.

"However, under the pathways system lambs were graded as either MSA or not," he said.

"Now we are at the point where we have enough data based on more than 120,000 consumer sensory scores to establish a full cuts-based grading model."

A key contributor to enabling the MSA Sheepmeat cuts-based model has been new objective carcass measurement technologies developed through the ALMTech program, which is supported by funding from the Australian Government Department of Agriculture, fisheries and forestry as part of its Rural RandD for profit program, in partnership with Meat and Livestock Australia, Australian Meat Processor Corporation, Australian Pork Limited, commercial companies, State Departments and universities.

Since 2016, ALMTech has been working to develop advanced measurements of red meat quality and quantity that will enhance the Australian beef, lamb and pork industries' ability to respond to demands and capture value-chain price differentials.

By 2040, it is estimated that ALMTech will have generated as much as \$510 million extra for the beef, lamb and pork industries in Australia.

Dr Packer said the prototype of the lamb grading model was developed around 12 months ago, and since then MLA and other partners had been working closely with the majority of medium to large sheepmeat supply chains towards commercialisation.

"This has been achieved through benchmarking activities on commercial flocks, allowing supply chains to understand the variation in eating quality and volumes across seasons," he said.

As a result of ALMTech's research investments, new technologies have been developed and commercialised to accurately capture critical measures of eating quality and carcass value, including intramuscular fat (IMF), lean meat yield (LMY) and hot standard carcass weight (HSCW).

"Having devices which can measure IMF as one of the traits of the MSA cuts-based model, has really progressed things," Dr Packer said.

"This has allowed us to demonstrate eating quality variation and the value proposition for the MSA cuts-based model for industry.

"We have been using the handheld SOMA NIR device which you apply to the face of a loin to generate an IMF output, which has been really useful for plants who don't have IMF technologies. There is also the MEQ probe which is commercialised and installed in a number of processing facilities and doesn't require a cut-surface, allowing a hot measure of IMF at chain speed."

The hope is that now processing plants are utilising IMF and LMY technologies, integrated with carcass tracking MSA cuts-based grading won't be far away.

"This would mean processors could provide consistency within their brand structures to consumers so they could really start saying 'what type of lamb do you want? We have an option at every price point'.

"That's when we see value and trust shared across the supply chain, starting with consumers willing to pay more for consistency. This allows brand owners to differentiate their product on customised eating quality specifications and other value drivers, with MSA doing the work in the background, rather than as a marketing tool per se."

ALMTech chief investigator Prof. Graham Gardner said it was an exciting time for the teams behind the scenes to get these technologies ready for industry.

"To see SOMA NIR and the MEQ probe out making a difference in the lamb industry is really exciting," Prof. Gardner said.

"ALMTech's end goal is to assist industry in utilising technology that will bring value back to them and, as the lamb MSA program nears a cuts-based grading model, I believe we are on the verge of a proliferation of lamb brands that will differentiate themselves thanks to these new technologies.

"Seeing how industry has picked up the ball and run with it is a testament to how innovative this industry is."

Dr Packer agreed the enthusiasm of lamb processors had pushed this project forward.

"It is fantastic to have the support of so many the key supply chains in the lamb processing industry. Many processors are in the process of upgrading plant infrastructure and technologies in preparation for what is to come, and this will increase ever more so over the next 12 to 18 months."



James Wetzler - Managing Director - 0429 346 242

Tracy Wetzler - 0428 535 730

Office - 0467 346 245



admin@wetzler.com.au • www.wetzler.com.au



Funding boost for STEM

CQUniversity's Gladstone Marina STEM Central has been given a \$200,000 funding boost, thanks to Australia Pacific LNG (APLNG) operated downstream by ConocoPhillips Australia.

The company, which has been the sole funder of the facility, announced the continuation of its partnership for a further two years.

CQUniversity Associate Vice-President of the Gladstone Campus, Luke Sinclair said he was thrilled to have APLNG on board again as principal partner of STEM Central.

"Since opening five years ago, APLNG STEM Central has fostered and enabled the growth of STEM capacity and has seen thousands of local students and members of our community come together to engage in STEM," Mr Sinclair said.

"The state-of-the-art hub has also delivered an academically rigorous education program aimed at upskilling teachers in STEM subjects and has proactively addressed the growing need for STEM education and skills in the region.

"None of this would have been possible without the shared commitment of APLNG, for which we are incredibly thankful."

ConocoPhillips Australia Manager Communities and Sustainable Development, Rob Gibb said they were delighted to extend the partnership for a further two years.

"We're proud to extend this partnership with CQUniversity to continue improving STEM education and training in regional Australia and ensuring the workforce of tomorrow is equipped with essential skills and knowledge," Mr Gibb said.

"STEM Central presents an education solution that addresses the causes of STEM knowledge gaps while creating interest and building capacity for teachers and students," he said.

"APLNG's continued investment in STEM Central will allow for ongoing education support to the community in an increasingly technology-focused future."



The funding boost will help students in the Gladstone region.

Picture: CQUNIVERSITY

APLNG has a rich legacy of supporting STEM education in the region.

STEM Central Lead Associate Professor Linda Pfeiffer said she was proud to see how far the hub had come since its inception.

"STEM Central's signature Innovation Chal-

lenge event for Years 5 – 8 students, delivered through BOP Industries, has evolved from Future Cities to Future Foods and this year we will be able to deliver Future Energy," Associate Professor Pfeiffer said.

"The Buraligim Weiber program for Year 4

Indigenous students is being expanded and includes lessons around the land and the sea.

"We are so grateful for the partnership and continued support from Australia Pacific LNG and look forward to continuing to work together in the future."

DEVELOPING THE FUTURE




JRT Group Specialises in

Demolition • Roadworks
Bulk Earthworks • Plant Hire • Civil Construction

Covering Central Queensland Including Rockhampton, Gracemere, Parkhurst, Yeppoon, Emerald, Gladstone, Clermont, Mackay and the Bowen Basin.

"Supporting our community for the last 25 years."

Offices in Rockhampton and Yeppoon
Phone: **07 4913 5300**
To email visit the website www.jrtgroup.com

ROCKHAMPTON

PHOTO & VIDEO EXPO

DEMO ALL THE LATEST GEAR!

GET A GREAT DEAL

**1 DAY ONLY
BIG SAVINGS**

DATE: **SATURDAY, 29 APRIL** TIME: 8AM - 5PM
WHERE: WALTER REID CULTURAL CENTRE, ROCKHAMPTON CBD

COME & TALK TO THE EXPERTS!









Ph 4921 1479 Rockhampton 



Volunteers and sponsors create vibrant atmosphere

For the 5th year, the Rockhampton community woke up bright and early on a picturesque Sunday morning to help RACQ CapRescue create clouds of colour in the Kershaw Gardens at Colour Me Capricorn Rockhampton, presented by DC Motors Nissan.

Over 550 participants ran, walked, danced, or strolled their way along the garden paths, creating a vibrant atmosphere and making it a colourful success by raising over \$13,000 for RACQ CapRescue.

Naming Rights Partner DC Motors, had a fantastic morning with all staff involved expressing how much fun the event was and that they will be back again next year.

“DC Motors has been a massive supporter of CapRescue for the longest time, it was a no brainer to support a fantastic cause in such a fun way!” Marketing and Events Manager for DC Motors, Eryn Mooney said. “Our General Manager is still trying to wash the colour powder from his hands!”

Volunteer contribution was at a record high with over 33 StepUp CapRescue Volunteers, supported by Thiess in attendance, including corporate volunteers from DC Motors and Blackwoods Rockhampton, plus student volunteers from the Rockhampton Grammar School. Volunteers from the CQU Health Clinic were also on hand to provide free sports massages to participants and host the warm-up.

“The success of Colour Me Capricorn relies heavily on the support of our volunteers,” Community Fundraising Officer, Caitlin Buttenshaw stated. “It’s one of the most popular events amongst our volunteers with everyone walking away smiling from ear to ear. This year some of the runners approached us about signing up to volunteer after seeing how excited the team was.”

Like all community events, Colour Me Capricorn relies heavily on the support of sponsors. Thanks goes out to this year’s event sponsors - Naming Rights Partner DC Motors Nissan and Water Station Sponsor Blackwoods Rockhampton. Livin the Bean also stepped up by fuelling the crew.

To volunteer for CapRescue or attend an upcoming event, check out their Facebook page and website- caprescue.org.au.



Community support ensures rescue helicopter can fly



As many of us have been out and enjoying the school holidays and our incredible backyard, RACQ CapRescue always encourages you to be safe and prepared.

In their region of over 350,000 km², your local Helicopter Rescue service is on call if things take a turn for the worst, thanks to the community’s support.

Recently Rescue300 had been tasked to several locations around our area where different activities have residents out and about.

One Saturday morning, the crew were called to Kirkwood near Gladstone to attend to a mountain biker who had a severe accident while riding with friends. Upon arrival at the scene, Queensland Ambulance Service (QAS) Paramedics stabilised the patient, who had suspected spinal injuries. After conducting a thorough assessment of the area, it was determined that a winch

retrieval was required. A Rescue Crewman and Critical Care Paramedic were wired down to assess and package the patient, and all returned to the aircraft. They then transported the man to the Rockhampton Hospital, where he underwent further scans and treatment before being taken to Brisbane for more specialised treatment.

Another favourite Central Queensland pastime, the beaches of Great Keppel Island, saw CapRescue heading offshore. They were to retrieve a female patient in her late 30s and her daughter, aged 6 years old, after reports that both were suffering severe pain from a suspected Irukandji marine sting.

Upon landing, the onboard medical team stabilised both patients for air transport to Rockhampton Hospital for further treatment.

From inland to the ocean and everywhere in between, RACQ CapRescue is here for the 300,000+ residents 24/7, 365 days a year.

Dedicated crew



The week starting March 6th was busy for RACQ CapRescue, with five tasks in three days.

One rescue that stood out included retrieving two patients, who had been involved in separate incidents in the area that were then transported from the same property.

It really showcased the dangers faced in rural, remote areas with a snake bite and altercation with a beast! Both patients were transported to Rockhampton hospital in stable condition for further treatment.

Despite the workload, the Rescue300 crew remained motivated to deliver their life-saving service throughout the rest of the week, even tackling some training.

Anyone would think with the smiles on their faces that they just might enjoy their jobs.





Story of the collaborative

The Central Queensland Industry Collaborative (CQIC) journey began on 17 September 2021 when an invitation was sent out by CQ Today for a lunch at which local industry business and representatives could discuss issues impacting on the infrastructure, manufacturing, engineering and fabrication industries in the local region.

The meeting also served to help establish the Industry Today section of CQToday as key source of news and information for local businesses.

Key speakers at the lunch were Member for Capricornia Michelle Landry MP, and then Deputy Prime Minister Barnaby Joyce (by Skype). The following list of thought starters was circulated prior to the meeting to stimulate discussion:

- Knowing the current and upcoming projects for CQ region timing and dollar value.
- - Recognise the local contract percentage requirements.
- Can the tendering process be more streamlined with government departments?
- Can we as a region address the project requirements with regards to capabilities and skills?
- Can the major overseeing contractors assist with the collaboration of the local contract involvement with other contractors?
- Do we need to upskill to address number three and how do we move forward with that?
- -Is there an efficient process for information regarding successful and non-successful tenders and is there a conflict resolution process for disputes?

Discussion around the various tables was intense while also serving to clarify the key issues facing local businesses seeking work on major infrastructure projects.

With this level of commitment assured, a further workshop was scheduled for 12 November to examine forthcoming projects and assess the steps local businesses should take to be ready. Marcus Lang from Asset Management Australia and Jordon Geddes from BRAWD agreed to facilitate the session. This workshop resulted in agreement on five top issues to act upon for CQIC:

- Skill shortage and labour turnover
- Shorter payment terms to better manage cash flow
- Requirement to leave a positive post-project legacy
- Scopes that suit capabilities and capacity (SHMS and QA ISO 9001 capability funding) improving those capabilities for not only regional but beyond?
- Ensuring Tier 1 project proponents understand capability and capacity early in project planning (forum of capabilities).

A critical decision for those businesses participating in CQIC up to this time was the form the organisation should take.

Recognising that three existing organisations – Capricorn Enterprise, Advance Rockhampton and the Capricornia Chamber of Commerce -were already in existence, it was



agreed that CQIC would not be incorporated but would work alongside the other bodies and develop a specific focus. The key work was “Collaborative” – CQIC would work with all comers.

An opportunity arose at short notice for businesses already embarked on the journey to meet with State Minister for Energy, Renewables and Hydrogen and Minister for Public Works and Procurement, Mick de Brenni on 15 February 2022. This enabled more businesses to inform the State of local capability as well as impediment to winning more work.

Key issues were improving the conditions of processes put in place by Tier 1 and Tier 2 contractors and the need some locals to invest in their operations so as to be in a position to have the capacity and capability to tender for future projects.

The next CQIC meeting was held on 11 March 2022. At this meeting participants were asked to bring along solutions to any of the 5 priorities. This resulted in a more detailed chart of issues and possible solutions.

Along with recognition of CQIC by all three levels of government, progress was occurring.

The next meeting took place on 2 September with Dave Grenfell, Chair of Apprentices and Trainees Queensland, outlining the Pre-cast Employment Pathways Program (PEPP) for which State Government funding was being sought.

It was at this time that the Federal Government announced it had pulled its funding from the Rockhampton Ring Road project. It is now a matter of history that three local business owners, Jack Trenaman, Jason Thomason and Grantley Jack, along with Senator Matt Canavan, undertook a road trip to Canberra and Brisbane to get the decision reversed.

This resulted in the Federal Government undertaking to review that decision, as well as the State’s Department of Transport and Main Roads gaining a much clearer understanding of local capabilities. Currently, it is understood that the Federal funding will be reallocated in the forthcoming Budget, while timelines for the project are being revised.

However, the uncertainty over the Ring Road project prompted CQIC to revisit one of its earliest objectives, namely, to identify the forward pipeline of key publicly funded infra-

structure projects. This resulted in the realisation that no such projects exist beyond the forward estimates timeline (4 years).

To facilitate agreement on a priority list, a further workshop was held on 10 March 2023 to gather ideas from a larger group of interested organisations. The Mayors of Rockhampton Regional Council, Livingstone Shire Council and Banana Shire Council attended, along with representatives from Regional Development Australia Central and Western Queensland and the Fitzroy Regional Organisation of Councils as well as the three business and economic development bodies. At the time of writing the outcomes of this workshop are still being tabulated.

What is very evident from progress to date is that CQIC has a definite role to play alongside all the other organisations. It has been successful in drawing together a wide group of interested organisations and businesses, identifying the key issues impeding greater success in obtaining work with major projects, and identifying what needs to be done in future to guarantee continued economic growth and diversification in the region.

Month for small business

Throughout May, the State Government will run a jam-packed program of business-focused events and activities across Queensland as part of Small Business Month.

The month showcases the diversity of Queensland's small business sector and provides small businesses with the opportunity to connect with local resources and networks to respond to business challenges and opportunities.

As well as offering face-to-face events, the State Government has cleared the way for more businesses to participate by delivering an expanded Queensland Small Business Month online, increasing the number of events delivered online or outside of standard business hours so more small business owners can join in.

"May is all about recognising how our small business owners make the amazing happen ... it's about loving your local and supporting them," Minister for Employment and Small Business and Minister for Training and Skills Development Di Farmer said.

"That's why we have an entire month of events and activities, online and in person, happening across the state.

"The Regional Networker Grant Program is targeted towards regional and remote areas of Queensland, ensuring more have access to support and information relevant to their local industry, community and region.

"It has been an exciting response with 41 regional organisations receiving government grants of up to \$2000 to run stakeholder events.

"Businesses can log into a range of online sessions, including small business fundamen-



Small Business Month showcases the diversity of Queensland's small business sector.

tals, growing your small business, and managing your cyber health."

As part of the grant, Longreach will host a Building Confident Women in Rural Business

event featuring an interview panel of women in business, telling stories of achievements and challenges and sharing learnings with other women who want to start a business and

how to get going.

For more information on activities and the support available to small businesses, visit the Business Queensland website.

Where To Stay

From the Beach to the Bush



CITYWALK MOTOR INN



Citywalk Motor Inn is your perfect base in Rockhampton. A centrally located motel, in walking distance to restaurants, pubs as well as the city centre.



(07) 4922 6009
129 William St, Rockhampton
stay@citywalkmotorinn.com.au
www.citywalkmotorinn.com.au

Blue Dolphin Caravan Park



Blue Dolphin Caravan Park is the perfect base for your Capricorn Coast holiday. Conveniently located in the heart of Yeppoon; the Park is only a short stroll to the Main Beach, Yeppoon Lagoon, boutique shops & trendy cafes. Whether you are caravanning, camping or require a self-contained cabin, we offer affordable & comfortable accommodation in a private & well-maintained setting.



Facilities:

- Free gas BBQ & picnic area
- Spacious, clean amenities
- Laundry (coin operated washing machines & dryer), iron available on request
- Digital & free to air TV reception
- Pet friendly (conditions apply)

Powered & Unpowered Sites:

- Concrete slabs
- Spacious sites for bigger rigs or that allow overnighters to stay hooked up
- Drive-through sites
- Pet friendly sites

Studio Cabins:

- Fully self-contained
- Ensuite
- Large deck
- Reverse cycle air-conditioning
- Welcome tea & coffee provided

74 Whitman Street, Yeppoon QLD 4703
(07) 4939 3140
bluedolphincaravanpark@outlook.com
www.bluedolphincaravanpk.com.au

12598038-SM16-23

ESCAPE TO Paradise



Echelon Apartments

Salt Yeppoon

Beaches On Lammermoor

DREAMTIME
resorts
dreamtimeresorts.com.au

12597782-FC16-23

BOOST YOUR BOOKINGS WITH US

Let readers know the best spots to stay on holiday or just a weekend away.

Advertise here for as little as \$66 per month

Talk to the team today phone 4863 5050 or email advertising@cqtoday.com.au



12599793-AV16-23

Where To Stay

From the Beach to the Bush



City Ville

APARTMENTS & MOTEL

PH: 4922 8322

Just minutes from Rockhampton CBD, Hospital, Sporting Complexes, Theatre and River Walk.

- Motel rooms with kitchenette
- Full self-contained 1,2,3,4 Bedroom Apartments
- 2 Bedroom Townhouses



City Ville Apartments & Motel

21 Bolsover Street, Rockhampton QLD 4700

bookings@cityville.com.au • www.cityville.com.au

5% discount when you use promo code: CQ2023 on website

161 ON GEORGE
HOTEL INTERNATIONAL



The accommodation features a 24-hour front desk and room service for guests.

Enjoy a continental breakfast

Text or Call 0467 736 356, 0491 328 229

161 George Street,
Rockhampton QLD 4700

NEWSPAPER

WANT THIS SPACE?

Call now 4863 5050



Mercure Rockhampton

located at the heart of the city offers travellers a local authentic stay.

We've got the best steak in town at the Riverside Restaurant which overlooks the picturesque Fitzroy River.

Find out more

www.riversiderestaurant.com.au

86 Victoria Parade,
Rockhampton QLD 4700
(07) 4994 5000



- * 50 GUEST ROOMS * PET FRIENDLY OPTIONS
- * ONSITE RESTAURANT * WIFI * GUEST LAUNDRY
- * UNDERCOVER PARKING * CONFERENCE FACILITIES
- * PRIVATE & CORPORATE EVENTS

07 4941 2000

57 QUEEN ELIZABETH DRIVE, DYSART QLD 4745



L'Amor Holiday Apartments

are situated on majestic and serene Lammermoor Beach

Just out from the busy centre of Yeppoon.

L'Amor accommodation offers air-conditioned apartments with private balconies boasting ocean views and views of the Keppel Islands and Southern Great Barrier Reef.

L'Amor Holiday Apartments are an ideal choice for couples, families and corporate guests offering 1, 2 and 3 bedroom apartments. All rooms are fully self contained if you prefer to self cater or there are numerous restaurants within a few minutes drive.

The complex includes a 1/2 size tennis court, large BBQ and entertainment area and inground swimming pool with kids wader. There is free off street parking for guests at the rear of the building. Complimentary Wireless internet access and conference facilities are also available.

L'Amor holiday apartments



100 SCENIC HIGHWAY, LAMMERMOOR
YEPPON QUEENSLAND

Phone: (07) 4933 6255

info@lamorapartments.com

Comfort is never far away in Central Queensland

Mackay - Windmill Motel

Rockhampton - Stirling Motel, Coffee House Apartment Motel

Gladstone - CQ Motel

Bundaberg - Takalvan Motel, Sugar Country Motor Inn

Maryborough - Blue Shades Motel



SOUTHERN CROSS
MOTEL GROUP

Phone: 1300 979 746

www.southerncrossmotelgroup.com.au

